

# OEM Part Number: QDD-400G-4XFR1

## PRODUCT FEATURES

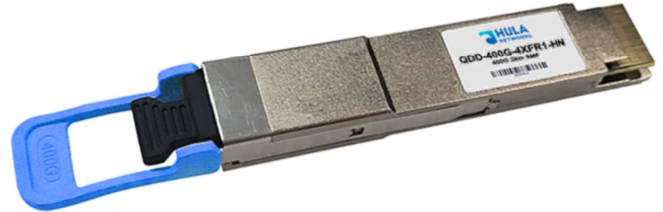
- Form Factor: QSFP-DD
- Speed: 400 Gbps
- Distance: 2km
- Operating Temperature: Commercial, 0°C to +70°C
- Connector: MPO-12
- Fiber Type: SMF

## APPLICATIONS

- 400G Ethernet
- Data Center Network

## EQUIVALENT PART NUMBER

- QDD-400G-4XFR1-HN



## BRAND COMPATIBILITY

- Arista: QDD-400G-4XFR1
- Cisco: QDD-400G-4XFR1-S
- Juniper: QDD-400G-4XFR1



## KEY SPECIFICATIONS

Part Type	Max Data Rate	Fiber Type	Transmitter	Output Power	Receiver Sensitivity	Power Supply	Power Dissipation	DDM
QDD-400G-4XFR1	400G / 4x100G	SMF	1311nm	-2.9 - 4dBm	<-4.4dBm	3.3V	8W (max)	Yes

## COMPLIANCE

QSFP-DD MSA, IEEE 802.3bs, CMIS Rev5.2, RoHS-6, GR-468-CORE

## QUALIFICATIONS AND TESTING

- **Manufacturer:** OEM equivalent part; designed, tested, fabricated to supplier specifications following ISO certified processes. RoHS compliant & class 1 laser certified.
- **Supplier:** 100% compatibility tested in the listed brands.
- **Order:** All parts are tested for traffic functionality per supported layer 2/3 protocol, DOM/DDM threshold and calibration, EEPROM MSA value verification, serial number verification & optical cleanliness

## WARRANTY

Lifetime replacement warranty.



## Contact your Hula Sales Rep for more details!